

FRONT ENTRY DOORS



YOUR HOME **DESERVES MORE**



ECO-HOME with Tropical Windows & Doors

Front entry doors; aren't they one of the most important parts of our home? They protect us from the hot, the rain, and the burglars, to mention just a few examples. Doors also keeps us away from street noise. But how do you make the right choice, and buy a door that will meet our expectations and serve us for years?

An issue that requires careful consideration before the purchase is the heat transfer coefficient (U). The lower its value, the more heat will stay with us inside. Tropical Windows & Doors offers **panelled doors with the U_p coefficient of $0.66 \text{ W}/(\text{m}^2\text{K})$.**

When choosing our door, let's not forget to check out their water resistance. It's the water resistance of the door that will keep the driving rain outside in times of strong winds and heavy tropical rain. The higher the class, the better the door protects our home.

Tropical Windows & Doors offers panelled doors rated 6A.

Infill panels are included in door leaves come in a variety of colors and structures. The elements can be milled, decorated with applications or made of insulated glass. **Panelled doors can be fabricated very large and high – up to 1.40 m (W) and almost 2.60 m (H).**

If, therefore, we dream of an impressive front entrance, this will be the perfect choice. But above all, the door should fit to the style of your home. If our interiors are the traditional ones, we should opt for a leaf with glass panels or wooden-like veneer. Lovers of modern interior can choose among RAL colours, think shade of graphite.

Let's take some time and choose a door with which we will create a beautiful entrance that will enchant our guests and will make us feel like we were in a safe haven.

U_D from 0.66 W/m²K

An issue that requires careful consideration before the purchase, is the heat transfer coefficient (U). The lower its value, the more heat will stay with us inside.
Tropical Windows & Doors offers Panelled Door system with the U coefficient of 0.66 W/(m²K).

Technical details:

Frame depth	77 mm
Leaf depth	77 mm
Infill panel thickness	44 and 77 mm
Maximum dimensions of the leaf	(H x L) L up to 1400 mm, H up to 2600 mm

Technical parameters:

Air permeability	Class 3, PN-EN 12207:2001
Water tightness	Class 6A (250 Pa), PN-EN 12208:2001
Wind load resistance	Class C5/B5, PN-EN 12210:2001
Thermal insulation	U _D from 0.66 W/m ² K

Aesthetically pleasing, decorative panels are available in various designs and colours

They come in four versions: ST, SI, SI + and AERO for a very good thermal performance

Weather strips provide high water tightness and air permeability, bringing comfort and money savings



Rigid and durable aluminium profiles allow to fabricate of large-dimensioned doors

Available solutions with or without doorsill

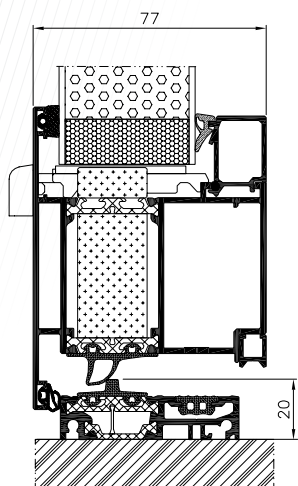


BASIC



Insert panels

- Triple glazing units, Ug coefficient of 0.7 W/m²K
- 44 mm thick panel
- Thermal transmittance for doors U_d from 0.9 W/m²K
- Four versions: ST, SI, SI+ and Aero

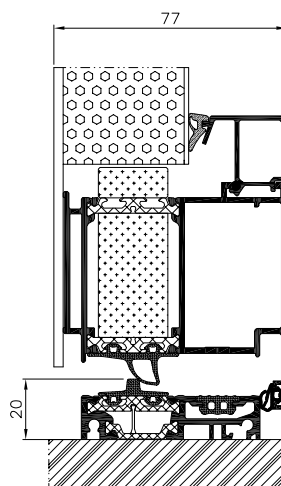


CLASSIC



Flushed on one side

- Triple glazing units, Ug coefficient of 0.7 W/m²K
- 44 mm thick panel
- Thermal transmittance for doors U_d from 0.9 W/m²K
- Four versions: ST, SI, SI+ and Aero

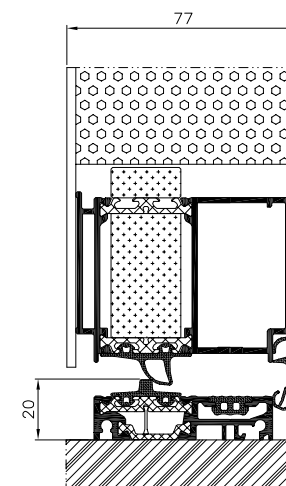


EXCLUSIVE



Flushed on both sides

- Triple glazing units, Ug coefficient of 0.7 W/m²K
- 77 mm thick panel
- Thermal transmittance for doors U_d from 0.66 W/m²K
- Four versions: ST, SI, SI+ and Aero



All available models can be inserted into the profiles or glued on one or both sides.



AP01

- AP 60.1600 stainless steel door pull
- Glazing (front): VSG 33.1 thermofloat
- Glazing (center): sandblasted float with transparent stripes
- Glazing (backside) thermofloat with black warm edge spacer
- Alu-Nox placed outside, applied
- Surface: RAL 9016 Traffic White



AP02

- AP 60.1600 stainless steel door pull
- Glazing (front): VSG 33.1 thermofloat
- Glazing (center): sandblasted float with transparent stripes
- Glazing (backside) thermofloat with black warm edge spacer
- Alu-Nox placed outside, recessed/flushed
- Surface: RAL 7016 Anthracite Grey Matt



AP03

- AP 60.1000 stainless steel door pull (front): VSG 33.1
- Glazing (front): VSG 33.1 thermofloat
- Glazing (center): sandblasted glass
- Glazing (backside) thermofloat with black warm edge spacer
- Alu-Nox placed outside, applied
- Surface: RAL 7016 Anthracite Grey Matt



AP04

- AP 60.1400 stainless steel door pull
- Alu-Nox recessed/flushed
- Surface: wood-like paint
Winchester/additional charge for woodgrain colors



AP05

- AP 60.1400 stainless steel door pull
- External millings
- Surface: RAL 7016 Anthracite Grey Matt



AP06

- AP 60.1000 stainless steel door pull
- Glazing (front): VSG 33.1 thermofloat
- Glazing (center): sandblasted float with transparent stripes
- Glazing (backside) thermofloat with black warm edge spacer
- External millings
- Surface: RAL 7001 matt



AP07

- AP 40.1400 stainless steel door pull
- Glazing (front): VSG 33.1 thermofloat
- Glazing (center): sandblasted float with transparent border
- Glazing (backside) thermofloat with black warm edge spacer
- External millings
- Surface: RAL 3004 Purple Red Matt



AP08

- AP 60.800 stainless steel door pull
- Glazing (front): VSG 33.1 thermofloat
- Glazing (center): sandblasted float with transparent border
- Glazing (backside) thermofloat with black warm edge spacer
- Surface: RAL 9016 Traffic White



AP09

- AP 60.1400 stainless steel door pull
- Glazing (front): VSG 33.1 thermofloat
- Glazing (center): sandblasted glass with transparent border
- Glazing (backside) thermofloat with black warm edge spacer
- Alu-Nox placed outside, recessed /flushed
- Surface: RAL 7016 Anthracite Grey Matt /WENGE/ additional charge for woodgrain colors



AP10

- AP 60.1600 stainless steel door pull
- Surface: RAL 9006 Silver Aluminium Matt



AP11

- AP 60.1600 stainless steel door pull
- Glazing (front): VSG 33.1 thermofloat
- Glazing (center): sandblasted glass with transparent strips
- Glazing (backside): thermofloat with black warm edge spacer
- Alu-Nox placed outside, applied
- Surface: RAL 9007 Grey Matt



AP12

- AP 50.1200 stainless steel door pull
- Glazing (front): VSG 33.1 thermofloat
- Glazing (center): sandblasted glass with transparent border
- Glazing (backside): thermofloat with black warm edge spacer
- Surface: RAL 3004 Purple Red Matt /RAL 9007 Grey Matt



AP13

- AP 210.1600 stainless steel door pull
- Glazing (front): VSG 33.1 thermofloat
- Glazing (center): sandblasted glass
- Glazing (backside) thermofloat with black warm edge spacer
- Alu-Nox placed outside, applied
- Surface: RAL 7016 Anthracite Grey Matt



AP14

- AP 60.1600 stainless steel door pull
- Glazing (front): VSG 33.1 thermofloat
- Glazing (center): sandblasted glass with transparent strips and a black-painted frame
- Glazing (backside) thermofloat with black warm edge spacer
- External millings
- Surface: RAL 9016 Traffic White



AP15

- AP 60.1200 stainless steel door pull
- Glazing (front): VSG 33.1 thermofloat
- Glazing (center): sandblasted glass
- Glazing (backside) thermofloat with black warm edge spacer
- Alu-Nox placed outside
- Surface: RAL 7016 Anthracite Grey Matt



AP16

- AP 60.1600 stainless steel door pull
- Glazing (front): VSG 33.1 thermofloat
- Glazing (center): sandblasted glass
- Glazing (backside) thermofloat with black warm edge spacer
- External millings
- Surface: RAL 7016 Anthracite Grey Matt



AP17



AP18



AP19



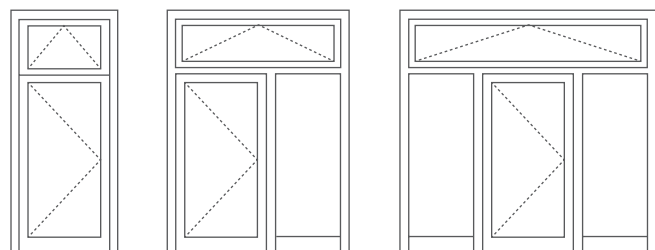
AP20

- AP 50.1200 stainless steel door pull
- Glazing (front): VSG 33.1 thermofloat
- Glazing (center): sandblasted glass with transparent strips
- Glazing (backside) thermofloat with black warm edge spacer
- External millings
- Surface: RAL 9016 Traffic White

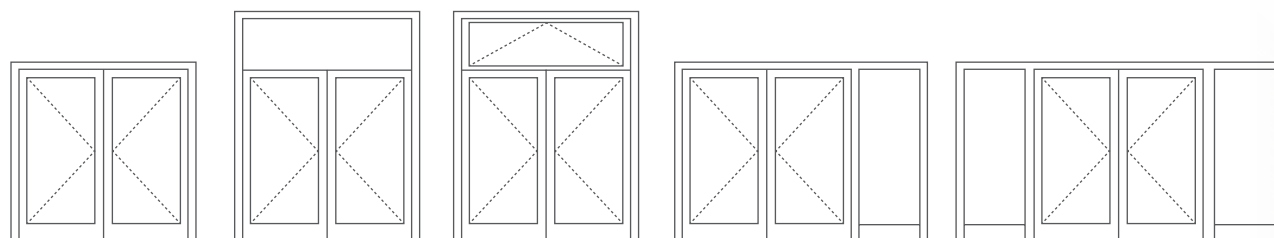
- AP 60.800 stainless steel door pull
- Glazing (front): VSG 33.1 thermofloat
- Glazing (center): sandblasted glass with transparent strips
- Glazing (backside) thermofloat with black warm edge spacer
- External millings
- Alu-Nox placed outside, recessed /flushed
- Surface: RAL 7001 Matt

- AP 60.800 stainless steel door pull
- Glazing (front): VSG 33.1 thermofloat
- Glazing (center): sandblasted glass with transparent strips
- Glazing (backside) thermofloat with black warm edge spacer
- Surface: RAL 9016 Traffic White

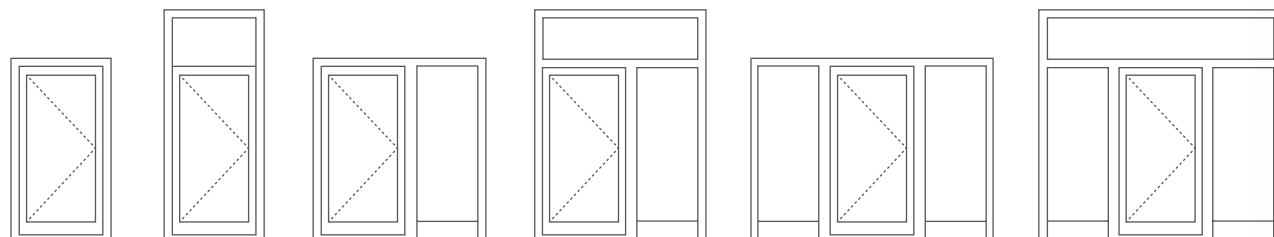
- AP 60.1600 stainless steel door pull
- Glazing (front): VSG 33.1 thermofloat
- Glazing (center): sandblasted glass with transparent strips and transparent decorative spacer
- Glazing (backside) thermofloat with black warm edge spacer
- AP 3400 "Rectangular" protection against scratches Alu-Nox placed outside, flushed
- Surface: RAL 7016 Anthracite Grey Matt



1 2 3



4 5 6 7 8



9 10 11 12 13 14



AP40 T door pull,
polished stainless steel,
matt

AP 40

AP 40.600	30x600 mm
AP 40.800	30x800 mm
AP 40.1000	30x1000 mm
AP 40.1200	30x1200 mm
AP 40.1400	30x1400 mm
AP 40.1600	30x1600 mm
AP 40.1800	30x1800 mm

AP50 bow door pull, polished
stainless steel, matt

AP 50

AP 50.600	30x600 mm
AP 50.1000	30x1000 mm
AP 50.1200	30x1200 mm

AP55 curved door pull, polished
stainless steel, matt

AP 55

AP 55.600	30x600 mm
AP 55.1600	30x1600 mm

AP60 T door pull,
polished stainless steel,
matt

AP 60

AP 60.600	40x10x600 mm
AP 60.800	40x10x800 mm
AP 60.1000	40x10x1000 mm
AP 60.1200	40x10x1200 mm
AP 60.1400	40x10x1400 mm
AP 60.1600	40x10x1600 mm
AP 60.1800	40x10x1800 mm

AP70 45° door pull,
polished stainless steel,
matt

AP 70

AP 70.600	40x10x600 mm
AP 70.800	40x10x800 mm
AP 70.1000	40x10x1000 mm
AP 70.1200	40x10x1200 mm
AP 70.1400	40x10x1400 mm
AP 70.1600	40x10x1600 mm
AP 70.1800	40x10x1800 mm

AP 30

AP 30 1800

AP 30 1600

AP 30 1400

AP 30 1200

AP 30 1000

AP 30 800

AP 30 600

AP30 45° door pull,
polished stainless steel,
matt

AP 30.600	30x600 mm
AP 30.800	30x800 mm
AP 30.1000	30x1000 mm
AP 30.1200	30x1200 mm
AP 30.1400	30x1400 mm
AP 30.1600	30x1600 mm
AP 30.1800	30x1800 mm





AP80 D door pull, polished stainless steel, matt

AP 80

■	AP 80.600	600 mm
---	-----------	--------

AP90 curved door pull, polished stainless steel, matt

AP 90

■	AP 90.600	600 mm
---	-----------	--------

AP110 45° door pull, polished stainless steel, matt

AP 110

■	AP 110.600	600 mm
■	AP 110.800	800 mm
■	AP 110.1000	1000 mm
■	AP 110.1200	1200 mm
■	AP 110.1400	1400 mm
■	AP 110.1600	1600 mm
■	AP 110.1800	1800 mm

AP120 door pull, stainless steel, matt

AP 120

■	AP 120.600	600 mm
---	------------	--------

AP200 T door pull, polished stainless steel/ Jatobe, matt

AP 200

■	AP 200.800	800 mm
■	AP 200.1200	1200 mm
■	AP 200.1600	1600 mm

AP210, 45° door pull, polished stainless steel/ Jatobe, matt

AP 210

■	AP 210.800	800 mm
■	AP 210.1200	1200 mm
■	AP 210.1600	1600 mm

AP 100

■	AP 100.600	600 mm
■	AP 100.800	800 mm
■	AP 100.1000	1000 mm
■	AP 100.1200	1200 mm
■	AP 100.1400	1400 mm
■	AP 100.1600	1600 mm
■	AP 100.1800	1800 mm

AP 100 T door pull, polished stainless steel, matt

//Ornaments



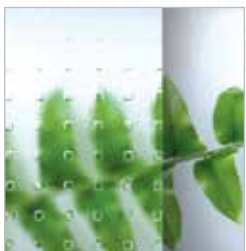
Master-Point

Chinchilla
White

Satinata



Master-Ligne

Master-Carre
White

Tropical Windows & Doors offers a wide range of glass with motif, glass made of transparent or ornamental glass in its most popular models

All door models come in variants with sidelight and toplight.

Version 1: glass with motif

Version 2: transparent glass

Version 3: ornamental glass

Sidelights and fixed lights include triple glazing units with warm glass spacers. Sidelights (fixed glazing) can be placed either on one or on both sides of the door assembly. Maximum sidelight width: 1400mm.

Extra ornaments (optional):

"Chinchilla White"

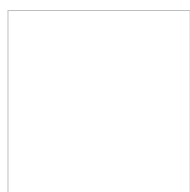
"Master-Point"

"Master-Ligne"

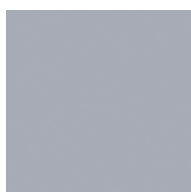
"Satinata"

"Master-Carre White"

// Basic colors*



RAL 9016 White



RAL 9006 Silver
Aluminium Matt



RAL 7001 Grey
Blue Matt



RAL 9007 Silver
Dark Matt



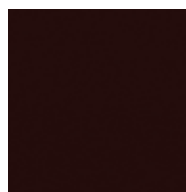
RAL 3004
Purple Red Matt



RAL 7016
Anthracite Matt



DB 703 Metallic
Microstructure



RAL 8019
Grey Brown



*Optionally, all RAL colors are available at extra charge

**Wood coatings for an additional charge

The colors may vary slightly from the finished product.

// Wood-like colors**



Golden Oak
ADEC D101



Walnut
ADEC O102



Mahogany
ADEC M103



Sapele Mahogany
ADEC M204



Beech
ADEC B108



Walnut Vein
ADEC O205



Pine
ADEC S106



Fir
ADEC J107



Gean
ADEC C110



Cherry
ADEC W109



Wenge
ADEC W205



Winchester
ADEC D207



AP01



AP02



AP02_P



AP03



AP04



AP05



AP06



AP07



AP08



AP09



AP10



AP11



AP12



AP13



AP14



AP15



AP16



AP17



AP18



AP19



AP20



YOUR HOME DESERVES MORE





Tropical Windows & Doors LLC
1951 NW89th PL
Doral, FL 33172-2606 USA
www.arubawindows.com