

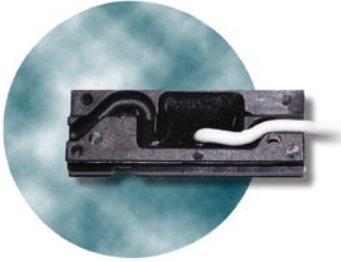


as per October 2000

PRODUCT INFORMATION



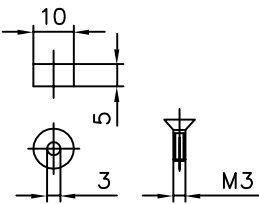
**UNIVERSAL LOCK MONITOR &
UNIVERSAL AIR CONDITIONING AND HEATING CONTROL SYSTEM**



- 2 versions available:
for use in aluminum as well as wood-plastic profile systems
- For clamping in aluminum profiles to permit subsequent adjustment
- VdS approval, class B and C
- Compatible with all standard alarm systems
- Supplied as a complete set with fixing material
- Outstanding cost-to-performance ratio

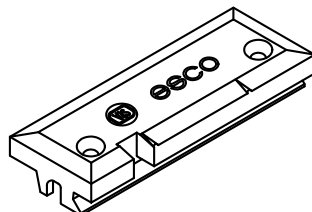
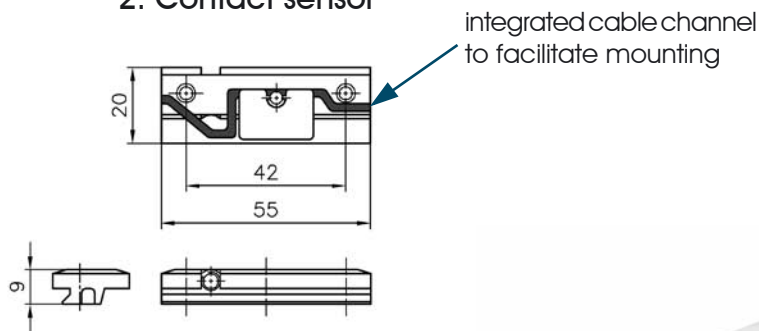
Complete set for aluminium windows comprising:

1. Contact magnet

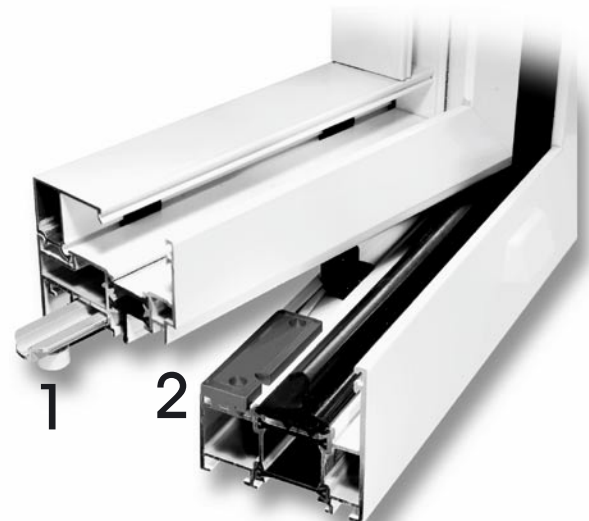


Seal to secure screw

2. Contact sensor



Contact sensor for clamping or screw-mounting for aluminium windows



Universal lock monitor

By coupling to the window mechanism, the universal lock monitor can be used for alarm and monitoring systems. The alarm system is only activated once all windows are correctly locked. With a permanently mounted magnet, the lock monitor can also be used as an opening monitor for break-in alarm systems on windows and doors.

esco	Aluminum profiles	Wood/plastic profiles
Article no.	24-442364	24-464066

Universal air conditioning and heating control system

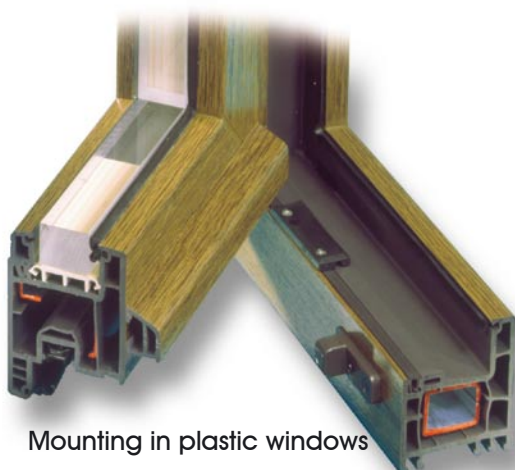
The universal air conditioning and heating control system is a window monitor for the control of heating and air conditioning systems. The switching unit, which can be clamped or screwed into position, permits suitable thermostat valves (such as Heimeier) to be actuated or opening signals transmitted to heating control systems for regulation of the heating output.

esco	Aluminum profiles	Wood/plastic profiles
Article no.	24-442372	24-466069

Testing and setting unit

For universal lock monitoring and universal air conditioning and heating control (battery included in the scope of delivery)

Article no.	24-496294
-------------	-----------



Mounting in plastic windows

Specifications lock monitor	
Housing materials	Polyamide 30% glass fibre
Standard cable (LSA capability)	6 m IYYZG L 4 x 0.14 mm ²
Contact load	5 VA
Voltage resistance	150 Vs
Switching voltage max	100 VDC
Direct switching current	0.5 A
Temperature with permanently laid cable	-25 °C to + 70 °C
Temperature with moving cable	-5 °C to + 50 °C
Protection class to DIN 40050	IP 67
Environmental class to VdS 2110	III
VdS approval number class B Opening and lock monitor	G 198514
VdS approval number class C Lock monitor	G 198030

Specifications air conditioning and heating control system	
Housing materials	Polyamide 30% glass fibre
Standard cable (LSA capability)	6 m IYYZG L 3 x 0.14 mm ²
Contact load	3 VA
Voltage resistance	150 Vs
Switching voltage max	30 VDC
Direct switching current	0.2 A
Temperature with permanently laid cable	-25 °C to + 70 °C
Temperature with moving cable	-5 °C to + 50 °C
Protection class to DIN 40050	IP 67

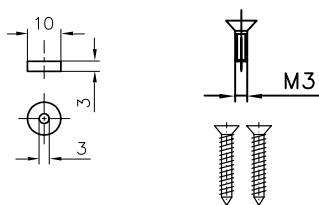
Note: Mounting instructions on request



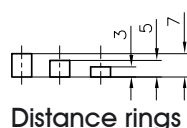
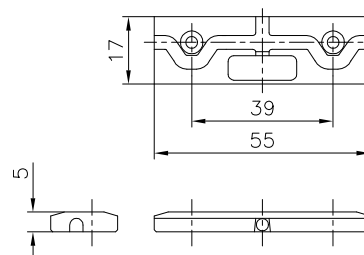
esco test unit

Complete set for wood/plastic windows comprising:

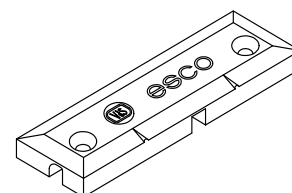
1. Contact magnet



2. Contact sensor



Distance rings



Contact sensor for screw-mounting for use in wood/plastic win-

esco

METALLBAUBESCHLÄGE

esco Metallbaubeschlage GmbH
Dieselstr. 2 • 71254 Ditzingen
Tel.: +49 (0)7156•3008-0, Fax: +49 (0)7156•3008-161
e-mail: info@esco-online.de
www.esco-online.de

